



SENTRY XC BOILER BLOWDOWN SYSTEM

Heat Exchangers



SAMPLE CONDITIONING

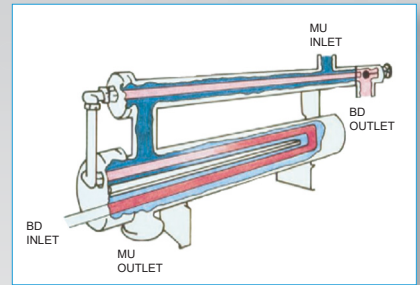
Regulate your blowdown water with our most efficient boiler heat recovery product. The XC Boiler Blowdown System uses proportional control to ensure your blowdown temperature and makeup temperature are equal, removing thermal concerns. The stainless-steel tube design ensures this piece of mind by withstanding thermal shock, water hammer, abrasive materials, and high water velocities.

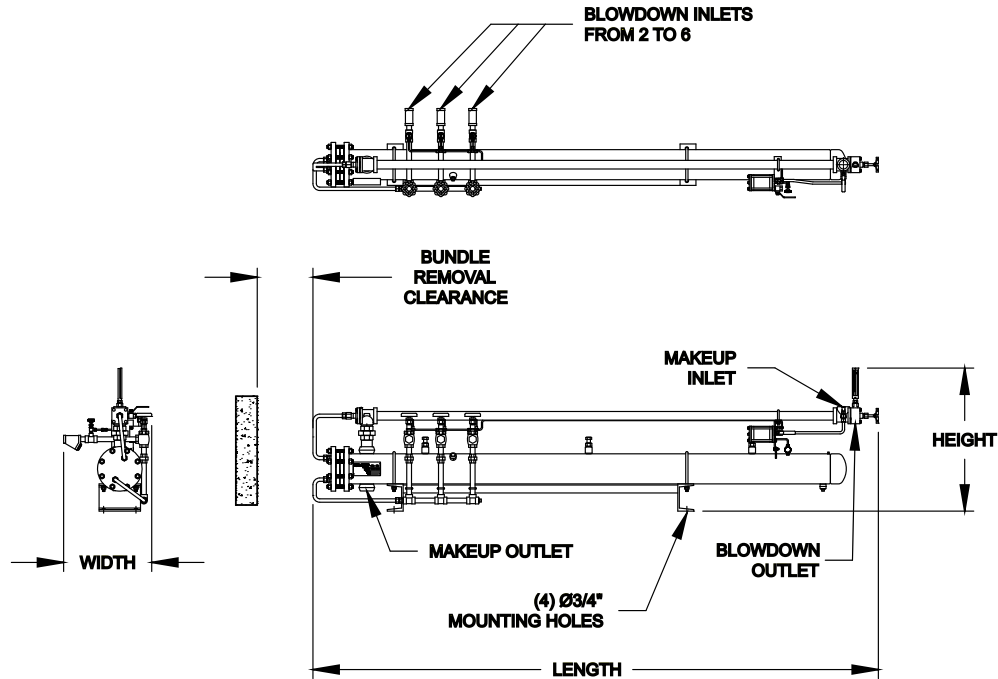
MODELS

X43-C		X46-C		X66-CL		X69-CL		X89-CK
X43-CM2		X46-CM2		X66-CLM2		X69-CLM2		X89-CKM2
X43-CM3		X46-CM3		X66-CLM3		X69-CLM3		X89-CKM3
		X46-CM4		X66-CLM4		X69-CLM4		X89-CKM4
				X66-CLM5		X69-CLM5		X89-CKM5
								X89-CKM6

BENEFITS

- Find increased flexibility with capacity to handle up to six boilers with the same system.
- The XC Blowdown System typically recovers up to 90% of heat lost during blowdown.
- This system's design can handle pressures up to 250 psi (17.2 bar), maximizing the product's capabilities.





MODEL	MAXIMUM NUMBER OF BOILERS	NOMINAL OVERALL DIMENSIONS (INCHES)				CONNECTION TYPE/SIZE (INCHES)			
		LENGTH	WIDTH	HEIGHT	BUNDLE REMOVAL CLEARANCE REQUIRED	MAKEUP INLET	MAKEUP OUTLET	BLOWDOWN INLET	BLOWDOWN OUTLET
X43-CM	3	53	18 1/2	29	30	1 1/2 FNPT	1 1/2 FNPT	3/4 FNPT	3/4 FNPT
X46-CM	4	80	18 1/2	29	66	1 1/2 FNPT	1 1/2 FNPT	3/4 FNPT	3/4 FNPT
X66-CLM	5	82 1/2	19 1/2	31 1/2	66	2 FNPT	2 FNPT	3/4 FNPT	3/4 FNPT
X69-CLM	5	125 1/2	19 1/2	31 1/2	102	2 FNPT	2 FNPT	3/4 FNPT	3/4 FNPT
X89-CKM	6	126	18	37	102	3" - 300# FLANGE	3 FNPT	3/4 FNPT	1 FNPT

SPECIFICATIONS

automatic proportional control valve	brass thermostatic tube; steel and ductile iron outer shell and connections; heat treated stainless steel seat and plunger; blowdown outlet thermometer; manually adjustable set point range for makeup/blowdown ratios of 3/1 to 50/1
sample cooler	counterflow Sentry TRW4222 to discharge blowdown sample at maximum of 120°F (49°C); tube side is stainless steel, rated at 2000 psi/850°F (138 bar/454°C); shell side is stainless steel, rated at 250 psi/450°F (17.2 bar/232°C) shell can be removed without disconnecting piping; cooler is equipped with isolation valves and inter-connecting piping
counterflow heat exchanger	removable U-tube bundle; 19 ga. 304 stainless steel tubes; U-bends 1.5 times thicker than tubes; rear supporting baffle, steel shell side with anti-vibration hold-down clamps; ASME Boiler and Pressure Vessel Code stamping for 250 psig/400°F (17.2 bar/204°C) rating; interconnecting piping of steel and stainless steel; supporting stands of steel
balancing valves	bronze 300 psi (21 bar) v-port with one bronze 250 psi (17.2 bar) strainer per valve for each boiler
dimensions	see above chart
finish	gray polyurethane enamel

sentry-equip.com

966 Blue Ribbon Circle North, Oconomowoc, WI 53066 U.S.A. | +1-262-567-7256 | sales@sentry-equip.com



© 2015 Sentry Equipment Corp. All rights reserved. All product and company names are property of their respective owners. It is solely the responsibility of end users, through their own testing and analysis, to select products and materials suitable for their specific application requirements, ensure they are properly installed, safely applied and properly maintained, and to limit their use to their intended purpose. Improper selection, installation or use may result in personal injury or property damage.

S-SW-SPS-00154-9 5-23

COMPANY WITH
QUALITY SYSTEM
CERTIFIED BY DNV GL
= ISO 9001 =